


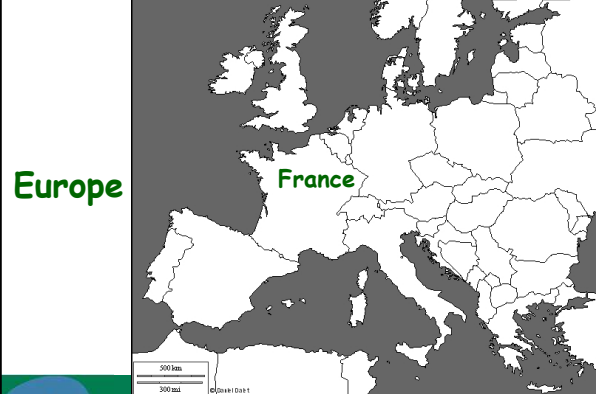
UMR1348 PEGASE
 Physiology, Environment and Genetics for
 the Animal and Livestock Systems

jaap.vanmilgen@rennes.inra.fr



UMR PEGASE
 Physiologie, Environnement et Génétique pour l'Animal et les Systèmes d'Élevage

AGRO CAMPUS OUEST | ALIMENTATION AGRICULTURE ENVIRONNEMENT | INRA



AGRO CAMPUS OUEST | ALIMENTATION AGRICULTURE ENVIRONNEMENT | INRA

We are in France



	surface area	population
France	675,000 km ²	65,000,000
Brazil	8,514,877 km ²	192,376,496

AGRO CAMPUS OUEST | ALIMENTATION AGRICULTURE ENVIRONNEMENT | INRA

We are in Brittany



AGRO CAMPUS OUEST | ALIMENTATION AGRICULTURE ENVIRONNEMENT | INRA

We are in 3 locations in/near Rennes



AGRO CAMPUS OUEST | ALIMENTATION AGRICULTURE ENVIRONNEMENT | INRA

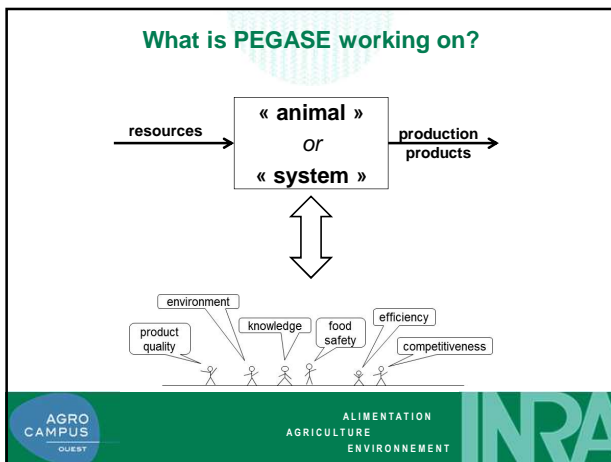
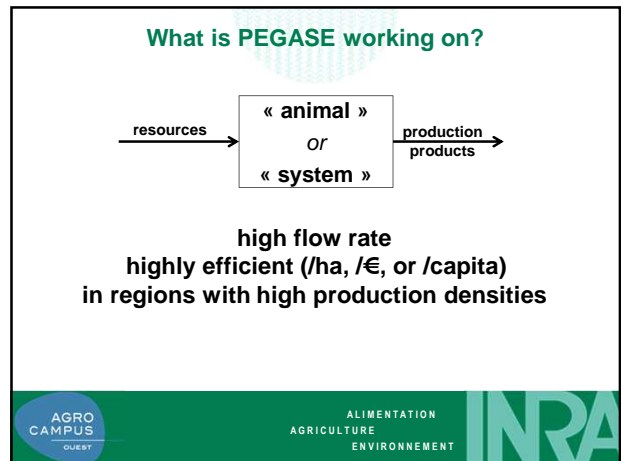
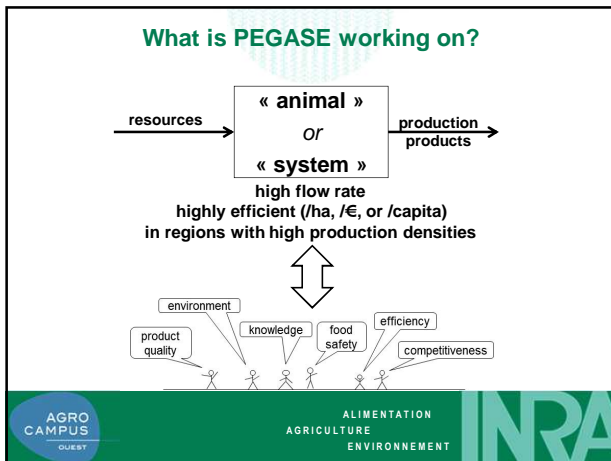
The role and the perception of animal production

livestock's long shadow
environmental impacts and options

“the livestock sector is one of the most significant contributors to the most serious environmental problems, at every scale from local to global”

“As it stands now, there are no technically or economically viable alternatives to intensive production for providing the bulk of the livestock food supply”

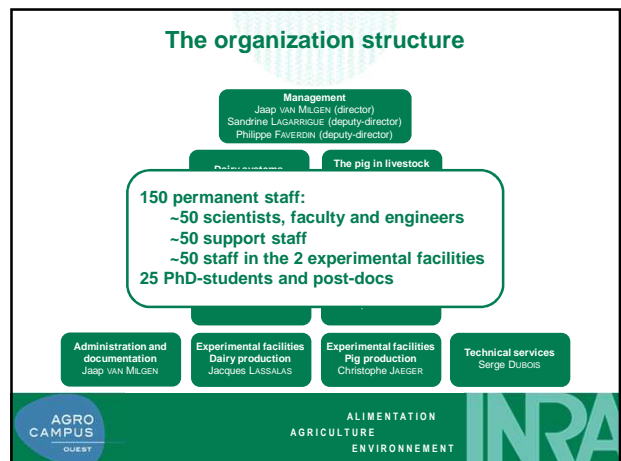
AGRO CAMPUS OUEST | ALIMENTATION AGRICULTURE ENVIRONNEMENT | INRA

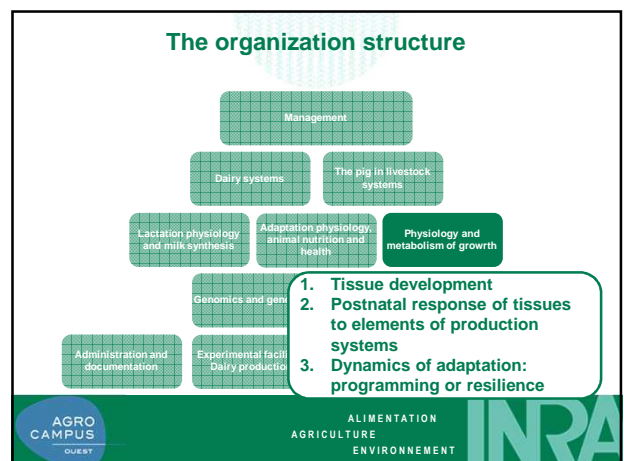
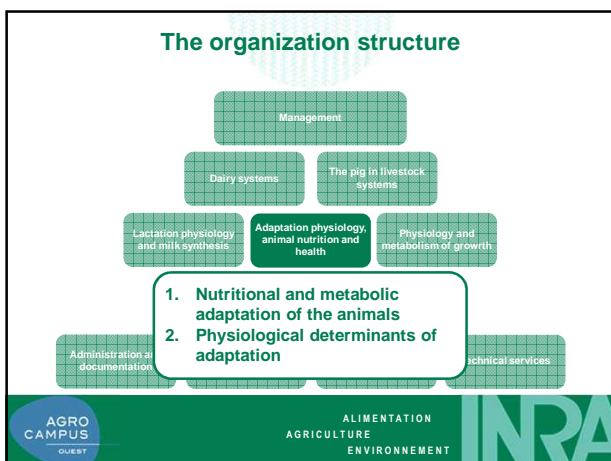
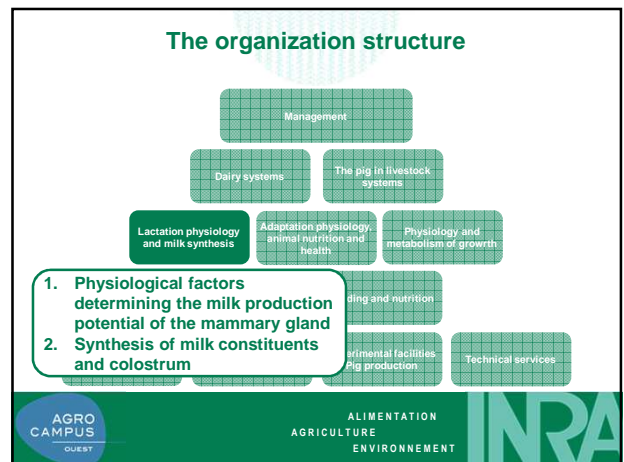
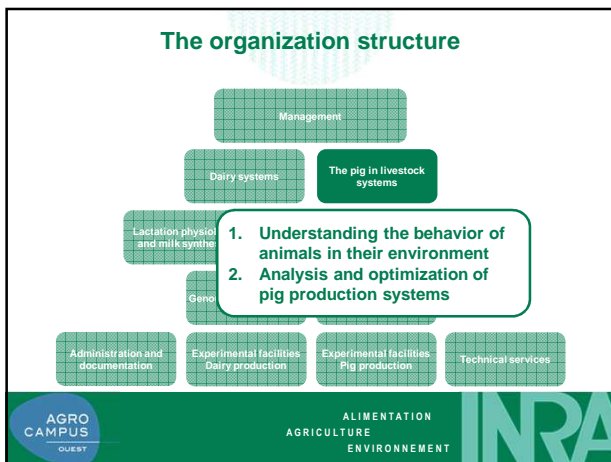
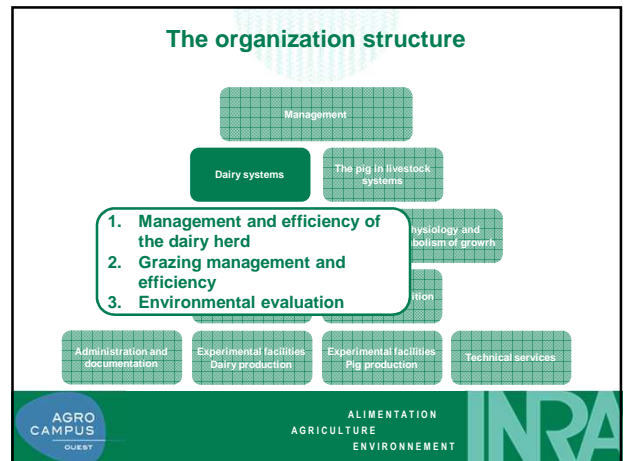
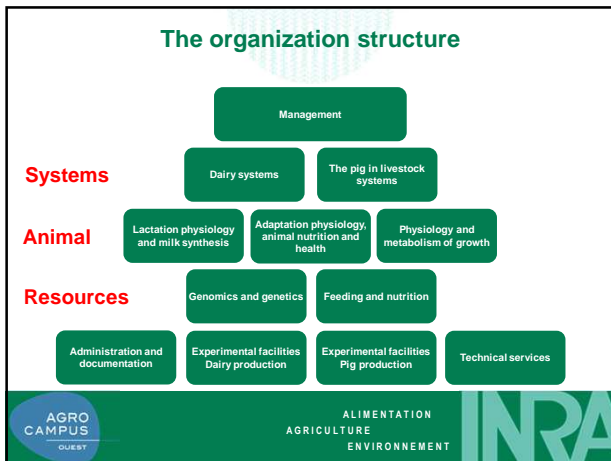


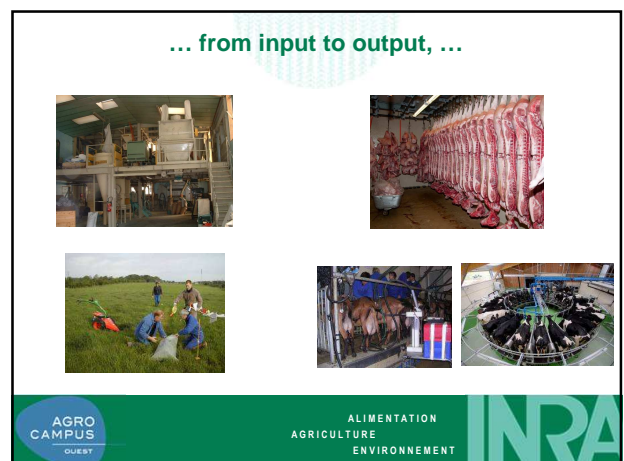
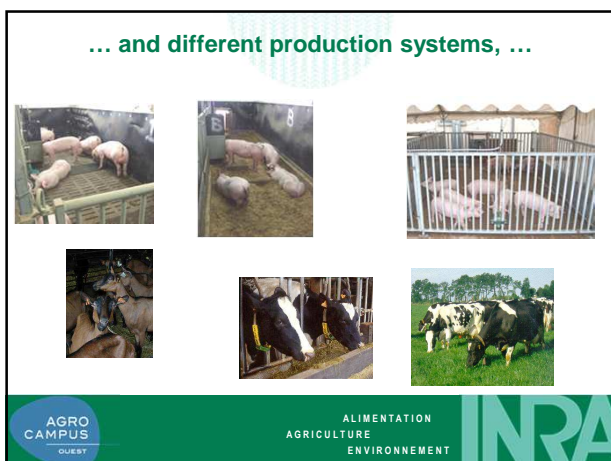
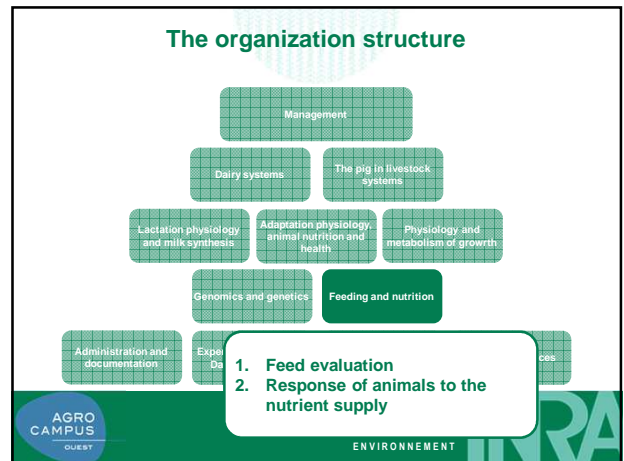
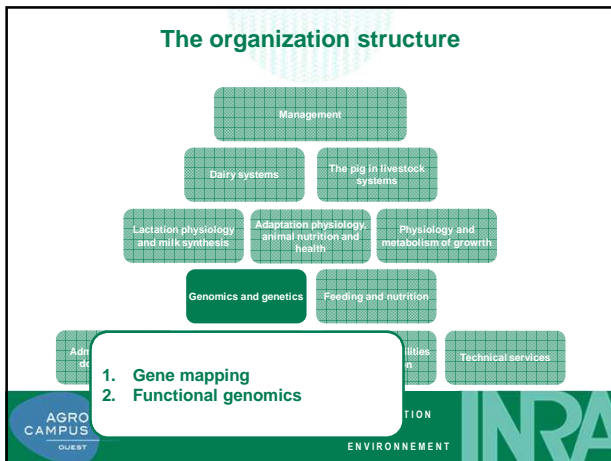
PEGASE's mission

To be an open, highly qualified research and educational organization, dealing with questions concerning animal production

AGRO CAMPUS QUEST ALIMENTATION AGRICULTURE ENVIRONNEMENT INRA








... using precision feeding systems ...

... for dairy cattle ...

... and growing pigs




AGRO CAMPUS QUEST

ALIMENTATION
AGRICULTURE
ENVIRONNEMENT

INRA

... and state-of-the art experimental facilities.




AGRO CAMPUS QUEST

ALIMENTATION
AGRICULTURE
ENVIRONNEMENT

INRA

UMR1348 PEGASE
Physiology, Environment and Genetics for
the Animal and Livestock Systems

jaap.vanmilgen@rennes.inra.fr



UMR PEGASE
Physiologie, Environnement et Génétique pour l'Animal et les Systèmes d'Élevage

AGRO CAMPUS QUEST

ALIMENTATION
AGRICULTURE
ENVIRONNEMENT

INRA